

Artist Husband and Talented Wife Redecorate Their Apartment

ANNE DOUGLAS

Chicago Daily Tribune (1923-1963); May 25, 1952;

ProQuest Historical Newspapers Chicago Tribune (1849 - 1988)

pg. SW A1

Artist Husband and Talented Wife Redecorate Their Apartment

MODERN TOUCH BRIGHTENS A 50 YEAR OLD FLAT

Skill of Occupants Shown in Project

BY ANNE DOUGLAS

Being an artist by profession helps, and so does having a talented wife who can whip things up with a needle and thread. But imagination, hard work and good taste are the prerequisites of a successful redecorating and re-furnishing job such as Lenn Redman and his wife, Jewel, have done in their apartment at 816 Cornelia av.

Its decor was very much like that of most apartments that were new about 50 years ago. Dark, heavily varnished woodwork, a built-in dining room buffet with leaded glass doors, out-moded ceiling light fixtures, a massive coat rack in the entrance hall—all these can be seen over and over in Chicago apartments, and the Redmans' was no exception.

They Had the Initiative

This young, modern couple had the initiative—and the building owner's permission—to make changes. Layers of paper were ripped off the walls and replaced with paint. Redman put 150 screws in the floors to eliminate squeaks. The woodwork was painted to match the walls. From the entrance hallway, there was a broad opening into the living room, much wider than necessary, that curtailed wall space to the disadvantage of furniture arrangements.

Redman installed seven poles a few inches apart at one side in the door frame, narrowing the opening without cutting off light into the hall, and hung small glass tanks of guppies and water plants in "frames" on the living room side. They give color and life to the arrangement. The divider is treated as a wall, with one section of the corner sectional sofa placed against it.

Picks Up Room Colors

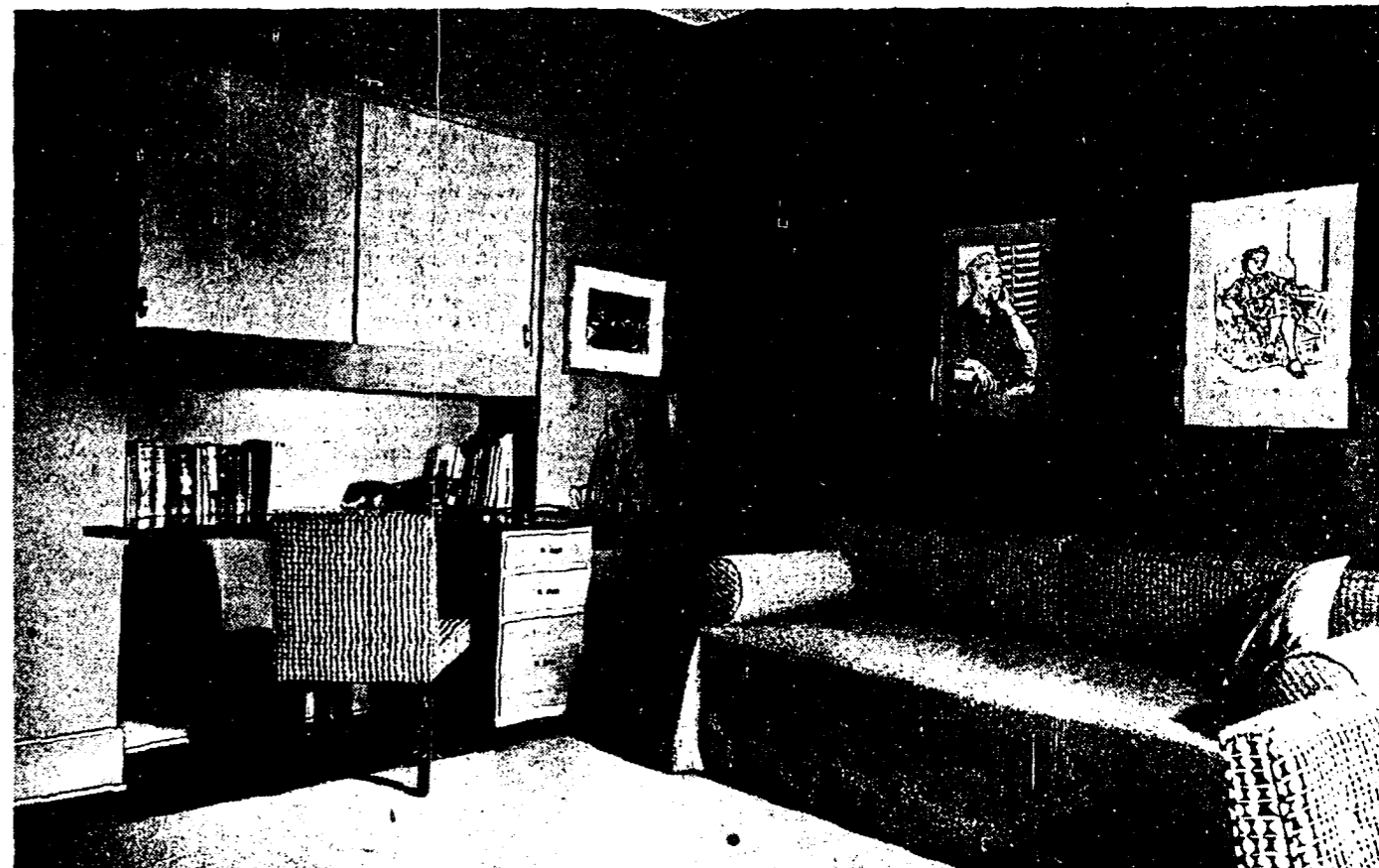
Mrs. Redman made draw draperies that extend the entire width of the living room's front wall. Their Hawaiian floral pattern picks up the colors of the room—cocoa brown walls, beige carpet, and green sofa and chairs. The furniture is all modern. Along one wall is a hanging bookcase, raised from the floor to give a feeling of lightness. An unattractive radiator was refurbished with a metal enclosure painted to match the walls so it recedes into the background.

Redman did his most original work in the hall. A caricaturist by profession, he decorated the end wall with a big panel of caricatures of his and his wife's families. They are seen immediately from the front door, and take the place of an old mirrored coat rack, which was an eyesore.

Room Given New Uses

The dining room was turned into a multipurpose room. First to come out was the built-in buffet. In the recess it occupied are overhead cabinets with natural birch sliding doors and simple brass handles. Below them a free-form shelf that serves as a desk top extends to the adjoining wall on one side, and a planter is dropped into it here. The top is lacquered black, and beneath it is a natural wood cabinet with a file drawer and two smaller drawers.

A tailored studio couch with



Lenn Redman (left) paints caricatures of his and his wife's families on apartment wall.

Attractive all-purpose room (above) has built-in wall cabinets, desk, and studio couch that becomes a bed for overnight guest.

Photo at right shows dining room in identical apartment in building. This is how the Redman's all-purpose room looked when they started work on it.

Jewel Redman (below) glances at magazine in their charming living room. Note how doorway to hall was narrowed by upright poles that have the effect of creating additional wall space.

(TRIBUNE Photos)



mustard yellow tweed cover and bolsters provides daytime seating and turns into a bed for overnight guests. The dining function of the room is carried out in the black lacquered extension table under the window. Dining chairs upholstered in black and white print serve also as desk and occasional chairs. A black lamp "tree" with three lights stands at one end of the couch. The television set is in this room also.

Outlines of a Skyline

Walls of the room are mustard yellow. The draperies, also made by Mrs. Redman, are a lighter tone of yellow with black outlines of a city skyline on them.

Framed paintings and sketches by Redman are hung on the walls of each room and a painting by Mrs. Redman is in the bedroom. This room has a double bed with storage headboard.

The spread and headboard covering are a red and blue mixture. Two Eames chairs of red plywood provide seating. A wallpaper panel of Paris railway scenes by Steinberg is on one wall, framed in red masking tape. The free-form rug, cut from a paper pattern by Redman, is another interesting feature of the bedroom.

While they were at it, the Redmans improved their kitchen and bathroom, too. Redman, being 6

feet 3 inches tall, found both the shower head and lavatory too low for him, so had them raised.